



Welcome to the Spring 2026 CanSkate Term!

Welcome to Campbell River Skating Club's CanSkate program!
Here's some important information about the program and what to expect this season.



Equipment & Clothing

All skaters are required to wear a **CSA approved hockey helmet** while on the ice. This policy will be strictly enforced. **Note that goalie helmets, ski/snowboard, multi-sport, and bike helmets are not permitted.**



CanSkaters should dress in a warm pair of pants, with a sweater or jacket, and mittens or gloves. Snowsuits and knee pads are not recommended, as they can make it difficult for skaters to move freely and fully bend their knees. To prevent tripping, pants should not be baggy or fall below the ankle, scarves must be tucked in, and jackets zipped up at all times.

Skates that fit properly and offer good support are essential to the safety and success of your skater. Adjustable-sized skates, nor ones made of plastic, are not ideal for learning. Skates should be laced all the way up and tied tightly, without causing pain. We highly recommend skaters purchase their own equipment (skates and helmet) from a reputable dealer to ensure they are using the same gear each week for the best experiences. We cannot guarantee the availability of rentals from Strathcona Gardens.

You can get skilled consultation and high-quality gear from our local retail partner, [North Edge Ice Sports](#). Rory Allen, our club's Director of Programs, is the owner and operator. The store offers an extensive amount of both new and gently used skates, equipment, and skating attire, as well as professional skate sharpening services. Skates should be sharpened once a term if skating one day a week, twice a term if skating twice a week. Please sharpen skates sooner if there are signs of rust, as well as if a skater steps on concrete or other surfaces besides the rubber matting. Skate guards are strongly recommended.

Skater Groupings

CanSkate is designed to encourage progressive learning throughout the season. During the first few sessions, we will be assessing skaters and assigning groups. Skill, age and interest (hockey, recreation, figure skating, etc.) are all factors that affect groupings. We may also suggest other programs based on your skater's skill level and interests. There is often a lot of movement between groups during the first few weeks, and groups may change during the season to accommodate skaters' developmental needs.

Communication

Program updates are posted on the CanSkate table however most communication is done via our website and email. We strongly recommend regular visits to our website as well as turning on all email communications through Uplifter. It is important that you log into Uplifter, select "My Account" from the drop down menu from your name in the top right corner, and find the "Communication Preferences" Symbol and ensure all options are switched to "Yes" to not miss out on important information and events. Be sure to follow us on social media for up to date info!

Registration Discount

Enjoying skating? Feeling motivated? Remember we offer a multi-day discount, which will apply automatically at check out when registering for multiple days! Payment plans are also available.

Adult Learn-To-Skate

We encourage anyone over the age of 18 to participate in our CanSkate program! We try our best to accommodate adult-only classes but if adult registration is low, you may be placed in a group which includes children.

CRSC Coaching Team

You will see different members of the CRSC coaching team on ice during each CanSkate session. Our coaches are highly-trained and certified by Skate Canada. You can learn more about our [coaching team](#) on our website.

Our CanSkate Coordinator, H McFarlane, is always happy to be of assistance with any questions or concerns.

Our trained Program Assistants are an integral part of CanSkate. These skaters come from our club's other programs including STARSkate and PowerSkate to offer assistance and mentorship. We value and appreciate our PA's commitment and passion to the sport. Please note that PA's should not be approached for information regarding programs, concerns or skater progress. Please direct these inquiries directly to our coaching team members.

Alternate Schedules

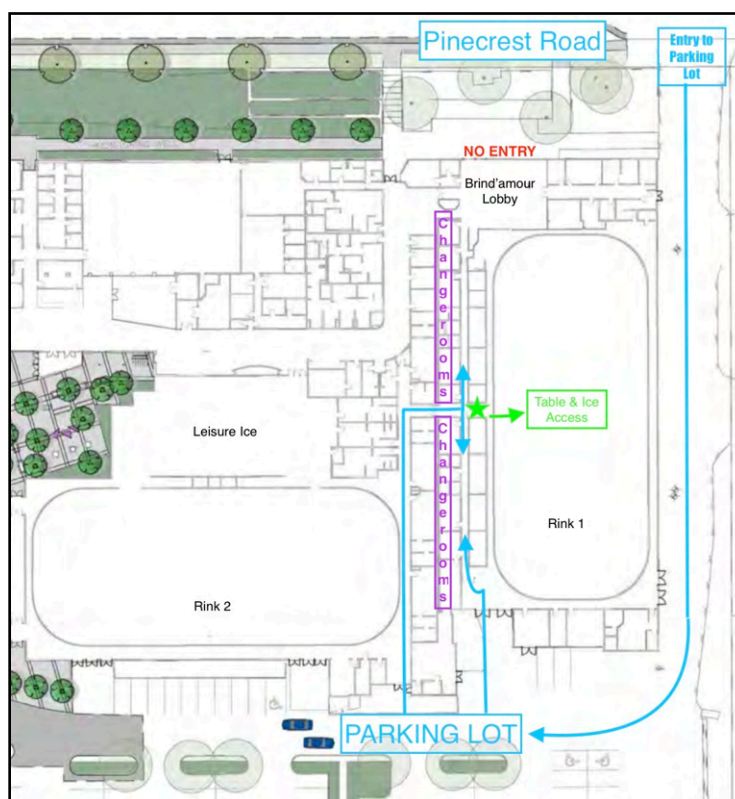
There are no expected cancellations or alternate schedules for the spring term.

The spring term ends **May 9th, 2026.**

Please check our website for the most up to date schedules.

Stay tuned for information regarding our full summer programming, as well as off ice options for Academy skaters and above in June 2026!

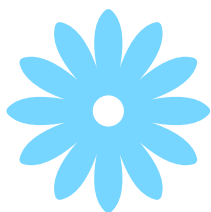
Where to Get Ready



CanSkate will be held on **Rink 1** for the Spring 2026 season. Please use the dressing rooms or down the hallway behind Rink 1 or the stands to get ready. If the dressing rooms are locked when you arrive, please notify one of the coaches or ask a member of Strathcona Gardens staff to unlock them. **It is a requirement this season that all skaters use the changerooms for putting on and taking off skates.** Due to space limitations the lobby will be occupied by other skaters in an off ice class. The Brind'amour Lobby entrance should not be used. The nametag table will be set up in the tunnel that leads from the changerooms to the ice surface. Please take note of the map for changeroom, name tag table and ice access.

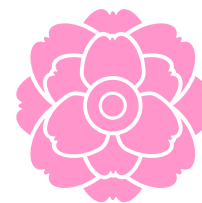
Theme Days & Special Events

Throughout the year, we have fun theme weeks and special events. During theme weeks, skaters are encouraged to dress up to match that week's theme! (Any costumes or clothing must be safe to wear on ice.) Please ensure any costume worn is appropriate, the skater's face is not covered, and no toy weapons or inflatable costumes are allowed on the ice.



April 21 & 23 **Spring Flowers**

Skaters can look forward to flower and spring themed circuits, special stickers, and other fun surprises! All skaters are invited to wear their most flowery or pastel attire!



May 5-7 **Sunshine and Rainbows**

Summer is almost here! Skaters can look forward to brightly coloured, sun, and rainbow themed circuits, a special challenge zone, props and more! Make sure to wear all the colours you can!



What's Comes Next?

PreCanSkaters

PreCanSkaters will be moved into rotation with other CanSkaters once they are up and moving. Following, skaters will continue in the CanSkate program.

CanSkaters

CanSkaters are generally completing stages 1-4. Following, they are invited either to the Academy program where CanSkate 5 & 6, as well as entry level figure skating elements, are the focus; or to the PowerSkate program, to work on skating skills for hockey.

Academy Skaters

Academy skaters are working on stages 5 & 6, as well as learning entry level figure skating elements. Skaters may be offered competition and other performance opportunities as they master new skills. Following Academy, skaters are invited into the Junior program, where more traditional figure skating practices begin and sessions will include group lessons (included in fees), private/semi private lessons (additional charges), as well as individual practice time.

Junior, Intermediate and Senior

Skaters will be offered regular competition and performance opportunities. Skaters will train either in the StarSkate pathway, in levelled events from Star 1-10 +Gold, or on the Podium Pathway beginning in PreJuvenile. Coaches will decide which pathway is most suitable for your skater. Skaters will take national assessments, enjoy longer sessions and more intricate off ice classes. They will also have opportunities to attend regional and provincial seminars, and other events. Skaters will be moved into new sessions based on their individual development and skill acquisition.

Badges & Report Cards

CanSkate teaches and trains three key components of ice skating – including agility, balance and control – to develop the fundamental skills needed for all ice sports. There are six stages of learning in each area, allowing skaters to progress from very simple movements to more complex skills. Skaters are rewarded with ribbons and badges as they master the skills in each stage. This year, we will be doing ongoing assessments and ribbons and badges will be distributed as they are achieved throughout the session - always return your name tag so that awards and other information can be handed out the next time you skate!



Assessments will be uploaded online for the last week. Parents can check their uplifter "Evaluations" section to view their skaters development. The online evaluations are updated 1-2 times per season and are a useful point of reference.

Boston Pizza



Heading out for dinner?
Remember to write "CRSC" on the back of your receipt and pass it to your server to help our club with ongoing fundraising efforts!

HAVE QUESTIONS?

h@skatecampbellriver.ca

MORE CANSKATE INFO

skatecampbellriver.ca/learn-to-skate

CONNECT WITH US

